

What Doesn't Stay in Vegas

Distance Parent Education



2011 EHDI Conference Presentation Atlanta, GA

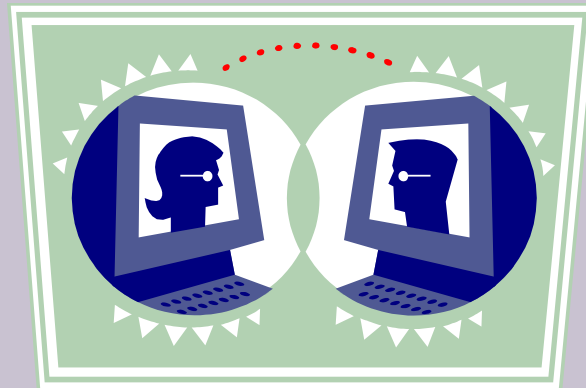
Jill Muhs, M.S.Ed

John Tracy Clinic

jmuhs@jtc.org

John Tracy Clinic

- Serves children 0-5 with HL and their families
- Provides education distance & onsite programs
 - ONSITE audiology, counseling, masters program
- Piloted training for professional mentoring
- Trying parent ed/support videoconferencing



Research Based

- Language growth of young children with HL is attained when
 - early identification is paired w EI that actively involves families
(Mary Pat Moeller,2000: Yoshinaga-Itano, 1999)
- Effective parent education/support should
 - focus on critical periods
 - build on parent strengths
 - be based on the relationship between parent behaviors and age appropriate child outcomes
(Riley, 1994)

Videoconference
Views

How it Looks
Check it out!

Pre:

- Visit once off site to meet families
- Pre/post calls between tech experts
- Pre/post calls between facilitators
- Handouts in multiple languages
- Designated room w equipment (2 sites)

Live:

- Sign in required for interaction
- Alert site they must answer
- Ask participants to come to mic
- Evaluations for parent input

Mentoring Support Leaders

- Observe at JTC
- Meet with mentor
- Participate in formal training
- Discuss parent centered approach
- Outline topics for parent ed
- Review adult education strategies



Teaching Methods

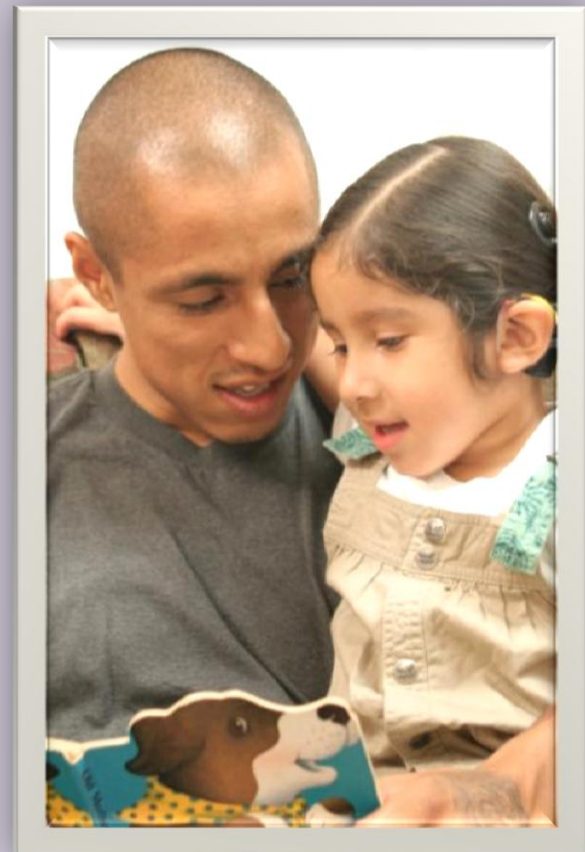
- Start with what they know
- Provide goal for session
- Offer specific information
- Facilitate workshop activity
- Apply strategies to their experiences
- Ask parents to practice at home
- Encourage sharing and questions



Parent Education

Comprehensive, Long Term Focus

- Topics in First Three of Six Modules
 - Language Development
 - How We Hear
 - HAs and CIs
 - Partnering with Audiologist
 - Communication Approaches
 - Building Blocks of Speech
 - Educational Planning
 - Informal Assessment
 - Books and Literacy



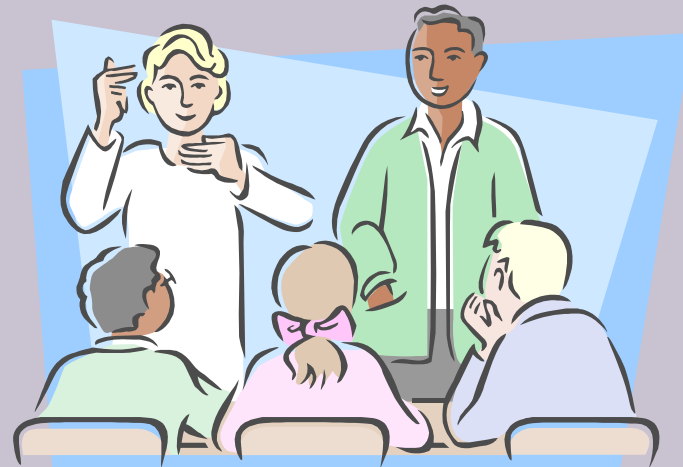
Equipment and Experts

- Web Ex
- Computers
- Mounted Cameras
- Webcam
- Microphones
- Texting phones
- FM systems
- Smart Boards
- Skype
- Media Savvy Troubleshooters*****



Using Interpreters

- Provide outline ahead of time
- Ask parents preferred view of ASL on camera
- Use FM onsite for spoken language
- Build in pauses for directions and responses



Results

- *Coming to class and being able to ask questions has been nothing short of a miracle ..I consider this group my family because they have me and my daughter hope and courage. AD*
- *We got the support and education needed to help our children's development... We are privileged this started in LV and hope it can happen throughout the US or the world! NM*

In the Families' Words

- *The benefits I have received through this are going to stay with me through the journey I am taking with my son and have helped me get a head start on what to expect. SA*
- *To sum it up, it is comfort, confidence, peace, and upliftment. I get the education I need as a parent to give my child what she needs to truly succeed. TM*

Barriers

People

- Limited tech support
- Participants arriving late
- Meeting varied needs
- Time frames for two groups

Process

- Losing sound
- Pixilated picture
- Disconnect w offsite
- Videos not playing
- Incompatible systems



JTC Live Distant Parent Class Individual Session Reviews

Date/topic/instructor _____

- | | | | | | |
|----|---------------------------------|---------|---------|---------|--------------|
| 1. | Level of Interaction | ___poor | ___okay | ___good | ___very good |
| 2. | Visual Effectiveness | ___poor | ___okay | ___good | ___very good |
| | a. Solutions Tried | | | | |
| | b. Alt ideas | | | | |
| 3. | Audio Effectiveness | ___poor | ___okay | ___good | ___very good |
| | a. Solutions Tried | | | | |
| | b. Alt ideas | | | | |
| 4. | Workshop Activity Effectiveness | ___poor | ___okay | ___good | ___very good |
| | a. Alt ideas | | | | |
| 5. | Other Concerns | | | | |
| 6. | Follow-up Needed | | | | |

Personalizing Learning

- Following a sequence
- Knowing your audience
- Narrowing the topic
- Providing guidance
- Refraining from comparing
- Assigning homework
- Having families share
- Following w support
- Maintaining same presenter/facilitators



Meet Our Families

Video: Enlisting Support

- Recognize their emotions
- Identify their values
- Describe their expectations

Future Collaboration

- Parents w/out services
- Families far from onsite
- Groups already meeting
- Grad student follow-up
- Cross agency initiatives



- Start small
- Find media people
- Experiment w tech
- Practice a day ahead
- Follow curriculum
- Provide strong support

What Has Worked For You?



EHDI Applications

- Distance ed is collaborative and cost effective
- Language learning is promoted early
- Path from identification to EI is parent-centered
- Parent education becomes pre, part and post EI
- A parent's empowerment outlasts services
- Parent networking can strengthen EHDI system