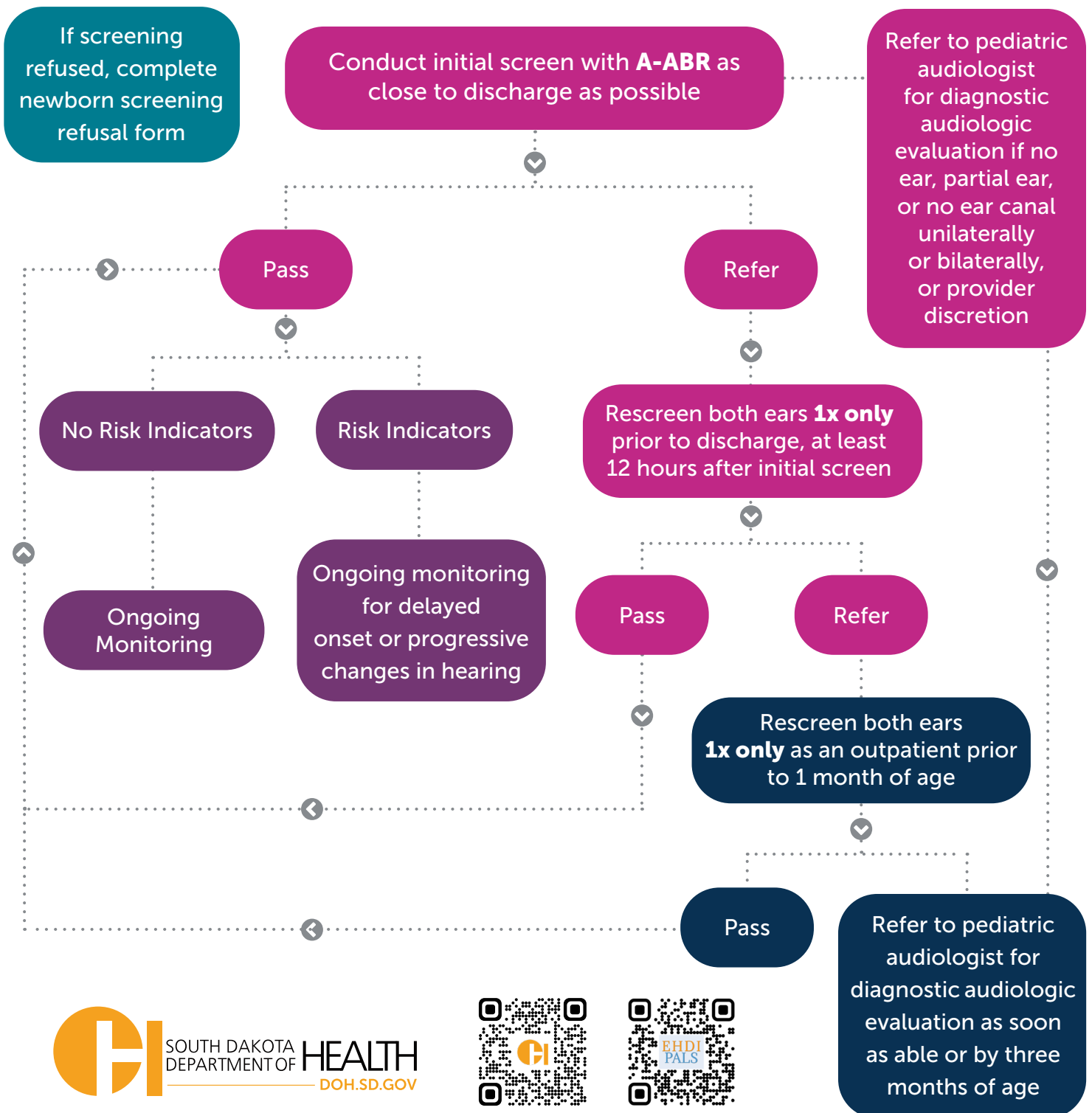


Newborn Hearing Screening Protocol

for NICU nursery in hospital births



Note: A-ABR = Automated auditory brainstem response; OAE = Otoacoustic emission.
 Created with information adapted from "Year 2019 Position Statement: Principles and Guidelines for Early Hearing Detection and Intervention Programs," by The Joint Committee on Infant Hearing, 2019, The Journal of Early Hearing Detection and Intervention, 4(2), 1-44.

Approved: December 2025,
 Audiology Partners