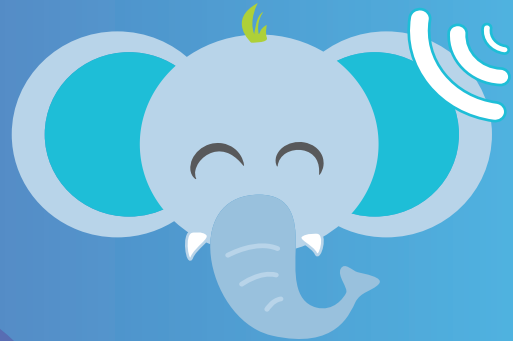


Communication with Your Child Begins Now



What is Language?

Language is the symbols and patterns people use to share thoughts, feelings, and information. Language can be part of spoken, signed, or written.

There are two main parts of language:

- **Receptive language:** how we understand what others say, sign, or write.
- **Expressive language:** how we use words or signs to share what we think.

Hearing loss can occur before a child has learned to understand and use language, or after a child has learned some language.

Growing Language

The first three years of life are important for learning language. This is true for both spoken languages like English and signed languages like American Sign Language (ASL).

Getting language and communication early helps your child grow, learn, and develop; no matter which tools or strategies you choose. What matters is making sure your child can connect and communicate with others. (ASHA)

(American Speech-Language-Hearing Association)

The Health Resources and Services Administration (HRSA), Department of Health and Human Services (HHS), provided financial support for this work. The contents are those of the author(s), they may not reflect the policies of HRSA, HHS, or the U.S. Government.



EhDI

South Dakota
Early Hearing Detection
& Intervention

For resources in South Dakota

EhDI36.com

